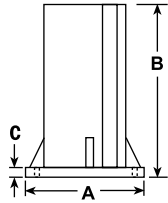
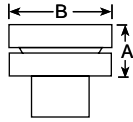


► Support Base



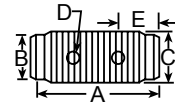
Cylinder Tons	Part No.	A (mm)	B (mm)	C (in.)
10	420062	177,8	177,8	7/16
25	420063	127,0	127,0	7/16

► Swivel Cap



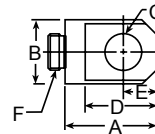
Cylinder Tons	Part No.	A (mm)	B (mm)
10 or 15	350144	22,4	36,5
25	350145	28,7	54,0
55 or 75	350376	31,8	71,4
100	351574	48,5	85,7

► Threaded Connector



Cylinder Tons	Part No.	A (mm)	B (mm)	C (in.)	D (mm)	E (mm)
5	25748	44,5	22,4 Dia.	3/4 - 14 NPSM	4,8 Dia.	12,7
10	25664	41,4	36,6 Dia.	1 1/4 - 11 1/2 NPSM	7,9 Dia.	14,2
25	25654	57,2	57,2 Dia.	2 - 11 1/2 NPSM	9,7 Dia.	16,0

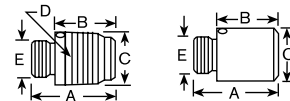
► Piston Clevis



Cylinder Tons	Part No.	A (mm)	B (mm)	C (mm)	D (mm)	E (mm)	F (in.)
5	350095	44,5	28,7	16,0	36,6	16,0	3/4 - 16
10 or 15*	350094	65,0	42,9	31,8	58,7	25,4	1 - 8
25**	420059	74,7	57,2	50,8	68,3	31,8	1 1/2 - 16

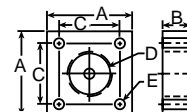
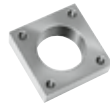
* Can be used with RD106, RD1010 Cylinder.
** RD256 & RD2514

► Threaded & Plain Adapters



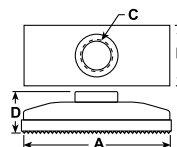
Cylinder Tons	Part No.	A (mm)	B (mm)	C (mm)	D (in.)	E (in.)
5	202178 (threaded)	41,4	28,7	26,9 Dia.	3/4 - 14 NPT	3/4 - 16 UNF-2A
10 or 15*	202179 (threaded)	46,0	26,9	41,4 Dia.	1 1/4 - 11 1/2 NPT	1 - 8 UNC-2A
25	202180 (threaded)	69,9	47,8	60,5 Dia.	2 - 11 1/2 NPT	1 1/2 - 16 UN-2A
10 or 15	350724 (plain)	50,8	31,8	37,6 Dia.	—	1 - 8 UNC-2A
25	350723 (plain)	54,1	31,8	57,2 Dia.	—	1 1/2 - 16 UN-2A

► Cylinder Mounting Plate



Cylinder Tons	Part No.	A (mm)	B (mm)	C (mm)	D (in.)	E (mm)
5	350099	76,2	25,4	54,1	1 1/2 - 16 UN-2B	8,6
10	350100	88,9	25,4	66,8	2 1/4 - 14 UNS-2B	8,6
15	350184	88,9	25,4	66,8	2 3/4 - 16 UN-2B	8,6
25	420064	127,0	50,8	100,8	3 5/16 - 12 UN-2B	16,8

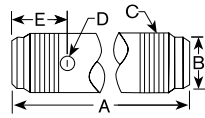
► Cylinder Flat Base



Cylinder Tons	Part No.	A (mm)	B (mm)	C (in.)	D (mm)
5	25750	114,3	63,5	3/4 - 14 NPSM	34,0
10 or 15*	32325	9,5	88,9	1 1/4 - 11 1/2 NPSM	36,6

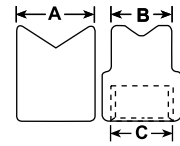
* Items require threaded adapter when used with "C" series cylinders. Can be used on threaded "CBT" cylinders without the use of an adapter.

▶ Extension Rod



Cylinder Tons	Part No.	A	B	C	D	E
		(mm)	(mm)	(in.)	(mm)	(mm)
5	350895	127,0	22,4 Dia.	3/4 - 14 NPT	8,4 Dia.	50,8
5	38908	254,0	22,4 Dia.	3/4 - 14 NPT	8,4 Dia.	50,8
5	350896	457,2	22,4 Dia.	3/4 - 14 NPT	8,4 Dia.	50,8
10	350897	127,0	36,6 Dia.	1 1/4 - 11 1/2 NPT	8,4 Dia.	50,8
10	38909	254,0	36,6 Dia.	1 1/4 - 11 1/2 NPT	8,4 Dia.	50,8
10	350898	457,2	36,6 Dia.	1 1/4 - 11 1/2 NPT	8,4 Dia.	50,8

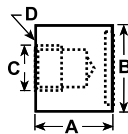
▶ 90° "V" Base



Cylinder Tons	Part No.	A	B	C
		(mm)	(mm)	(in.)
5	25388*	35,1	26,9	3/4 - 14 NPSM
10	25395*	54,1	54,1	1 1/4 - 14 NPSM

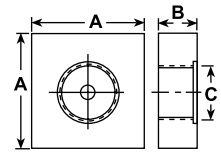
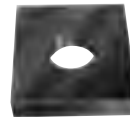
* Items require threaded adapter when used with "C" series cylinders. They may be used on threaded "CBT" cylinders without the use of an adapter.

▶ Cylinder Base Attachment



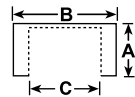
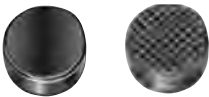
Cylinder Tons	Part No.	A	B	C	D
		(mm)	(mm)	(in.)	(mm / in.)
5	208380	41,4	44,5 Dia.	3/4 - 14 NPSM	7,1 Dia. (2) 1/4 - 20 UNC x 3/4 Lg. Socket Head Cap Screws
10	208381	47,8	63,5 Dia.	1 1/4 - 11 1/2 NPSM	8,6 Dia. (2) 5/16 - 18 UNC x 3/4 Lg. Socket Head Cap Screws
25	208382	60,5	85,9 Dia.	2 - 11 1/2 NPSM	13,5 Dia. (2) 1/2 - 13 UNC x 1 Lg. Socket Head Cap Screws

▶ Plunger Base



Cylinder Tons	Part No.	A	B	C
		(mm)	(mm)	(in.)
25	25652	152,4	31,8	2 - 11 1/2 NPSM

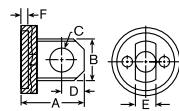
▶ Plain & Serrated Saddles



Cylinder Tons	Part No.	A	B	C
		(mm)	(mm)	(in.)
5	25746* (serrated)	28,7	33,3 Dia.	3/4 - 14 NPSM
10 or 15*	31772* (serrated)	28,7	50,8 Dia.	1 1/4 - 11 1/2 NPSM
25	31776* (serrated)	33,3	76,2 Dia.	2 - 11 1/2 NPSM
5	351575* (plain)	28,7	33,3 Dia.	3/4 - 14 NPSM
10	24016* (plain)	28,7	50,8 Dia.	1 1/4 - 11 1/2 NPSM
25	351576* (plain)	33,3	76,2 Dia.	2 - 11 1/2 NPSM

* Items require threaded adapter when used with "C" series cylinders. They may be used on threaded "CBT" cylinders without the use of an adapter.

▶ Body Clevis †



Cylinder Tons	Part No.	A	B	C	D	E	F
		(mm)	(mm)	(mm)	(mm)	(mm)	(mm)
5	350096	52,3	28,7	16,0	16,0	14,2	6,4
10	350097	76,2	42,9	22,4	25,4	25,4	6,4
15	350098	77,7	42,9	22,4	25,4	25,4	6,4
25	420061	90,4	57,2	31,8	31,8	31,8	6,4

† Mounting screws are included.