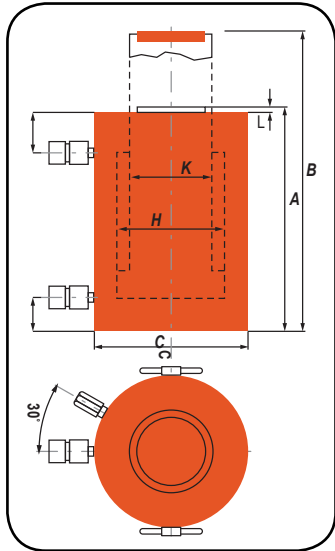


Model Shown:  
**RC7406D**



► **Technical Dimensions**



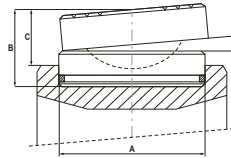
► **Features**

**HIGH-TONNAGE CYLINDERS RUGGED AND RELIABLE.**

- Cylinders come standard with hardened caps.
- Cylinders may be “dead-ended” without damage.
- Safety relief valve prevents over-pressurization of the retract circuit.
- Each cylinder has two 9796 3/8” NPTF female half couplers.
- Complies with ANSI / ASME B30.1 safety standards.



**Optional Swivel Load Caps Ordering Info**



Reduce the effects of off-center loading. Tilt up to 5 degrees. Radial grooves on top of cap reduce load slippage. Notch across face of each cap helps keep loads having a round shaped center.

Used with Cylinder	Swivel Cap Order No.	Wt. (kg)	A (mm)	B (mm)	C (mm)
RC740 D	2000822	19,3	200,1	78,7	55,9
RC965 D	2000823	40	248,9	104,1	76,2
RC1220 D	2000825	113	322,6	175,3	124,5

► **Ordering Information**

Cyl. Cap. (ton)	Stroke (mm)	Order No.	Oil Cap. (cm³)	A	B	C	F	G	H	K	L	Cylinder Effective Area (cm²)	Metric Tons at 700 (bar)	Prod. Wt. (kg)
				Retracted Height (mm)	Extended Height (mm)	Outside Dia. (mm)	Base to Port (mm)	Cylinder Top to Port (mm)	Bore Dia. (mm)	Piston Rod Dia. (mm)	Piston Rod Protrusion (mm)			
740	50,8	RC7402D	4811	283	333	430	65	105	350,5	280	9	673,5	673,5	304
	152,4	RC7406D	14432	398	548	430	65	105	350,5	280	9	673,5	673,5	398
	254,0	RC74010D	24053	508	758	430	65	105	350,5	280	9	673,5	673,5	490
965	50,8	RC9652D	6283	310	360	490	70	115	398,8	320	10	878,7	879,7	434
	152,4	RC9656D	18849	420	570	490	70	115	398,8	320	10	878,7	879,7	551
	248,9	RC96510D	31400	530	780	490	70	115	398,8	320	10	878,7	879,7	668
1220	50,8	RC12202D	7952	330	380	550	80	125	449,6	360	10	1113,3	1.113,3	584
	152,4	RC12206D	23856	440	590	550	80	125	449,6	360	10	1113,3	1.113,3	731
	254,0	RC122010D	39761	550	800	550	80	125	449,6	360	10	1113,3	1.113,3	878