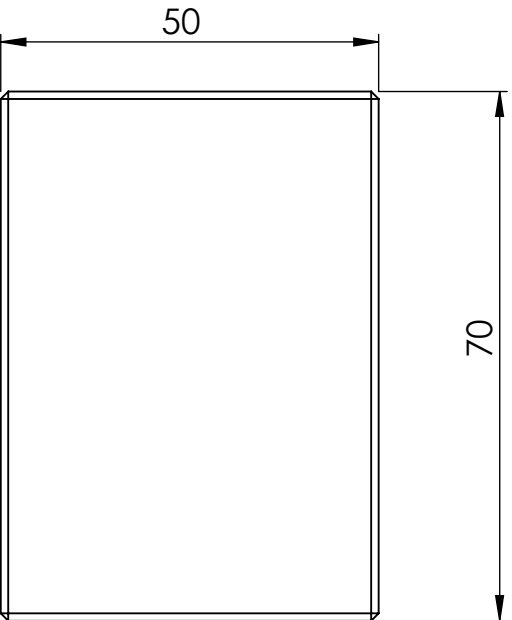
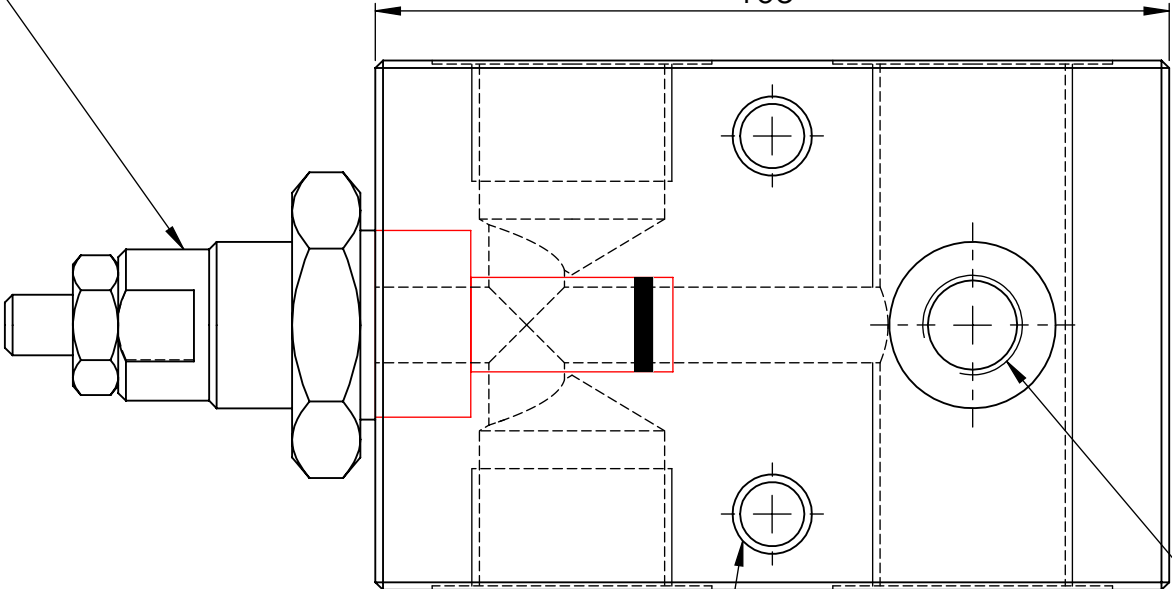
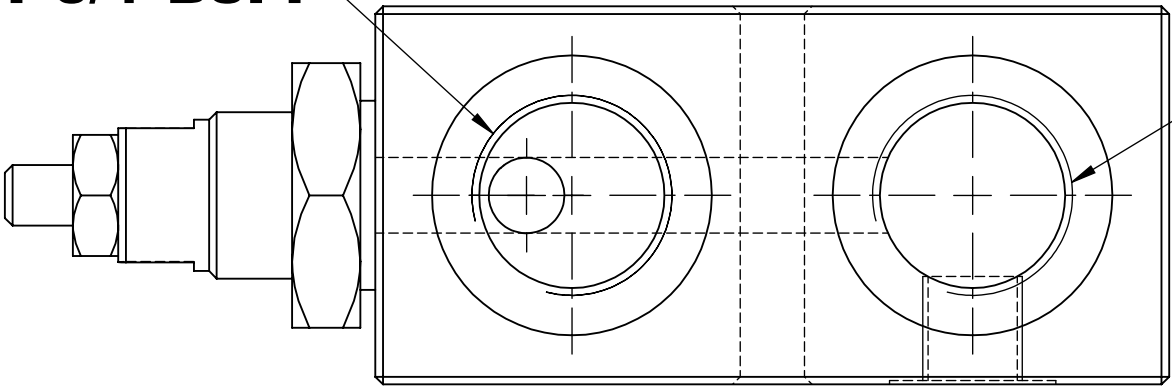
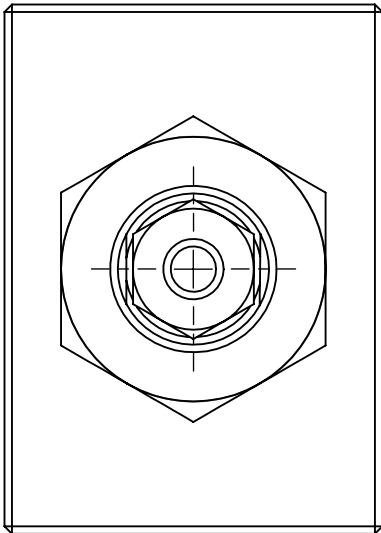


"T" PORT 3/4"BSPP

"P" PORT 3/4"BSPP

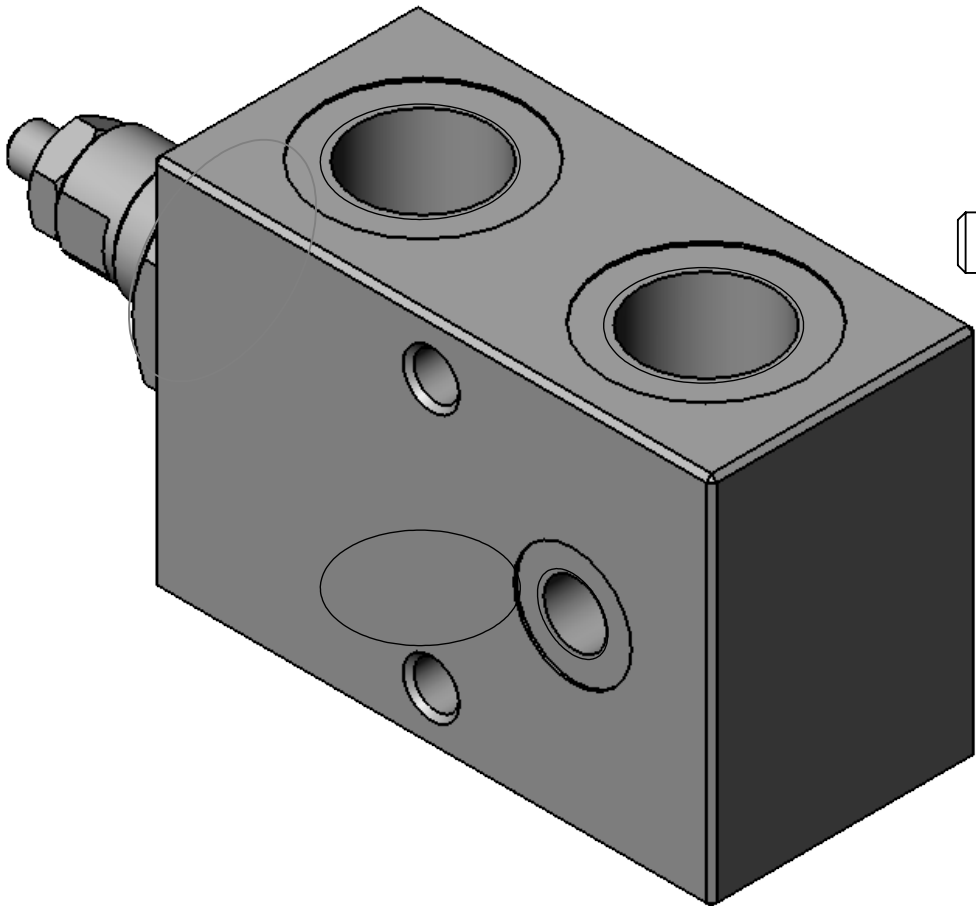
CMP30  
WITH PANEL  
MOUNTING NUT



2 HOLES 8.5

"MANO" 1/4"BSPP

NOTE.  
DIMENSIONS ARE APPROXIMATE  
PLEASE ADJUST TO SUIT YOUR MATERIAL  
AND RELIEF CARTRIDGE



UNLESS OTHERWISE SPECIFIED: DIMENSIONS ARE IN MILLIMETERS SURFACE FINISH: TOLERANCES: LINEAR: ANGULAR:				FINISH:  STANDARD		DEBUR AND BREAK SHARP EDGES		DO NOT SCALE DRAWING		REVISION <b>A</b>	
								<b>MHS</b> MODULAR HYDRAULIC SYSTEMS LIMITED		REDAN HILL ESTATE ALDERSHOT HAMPSHIRE GU12 4SJ	
								01252 333883 sales@mhs.co.uk mark@mhs.co.uk WWW.MHS.CO.UK			
DRAWN <b>MRB</b>				SIGNATURE		DATE <b>07/07/17</b>		TITLE:  <b>INLINE RELIEF VALVE 3/4"BSPP</b>			
CHK'D											
APPV'D											
MFG											
Q.A											
						MATERIAL:  STANDARD		DWG NO. <b>VMP12C3001</b>		A3	
						WEIGHT:		SCALE:1:1		SHEET 1 OF 1	